

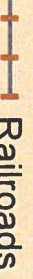
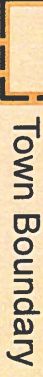
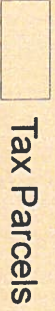
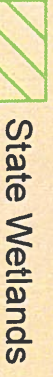
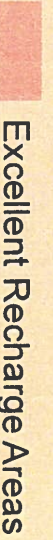
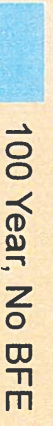
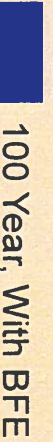



Town of Milton, Delaware

Exhibit D1: Natural and Environmental Lands

-  Contours (5ft interval)
-  Roads
-  Railroads
-  Town Boundary
-  Tax Parcels
-  State Wetlands
-  Excellent Recharge Areas
- Flood Zones**
 -  100 Year, No BFE
 -  100 Year, With BFE
 -  500 Year

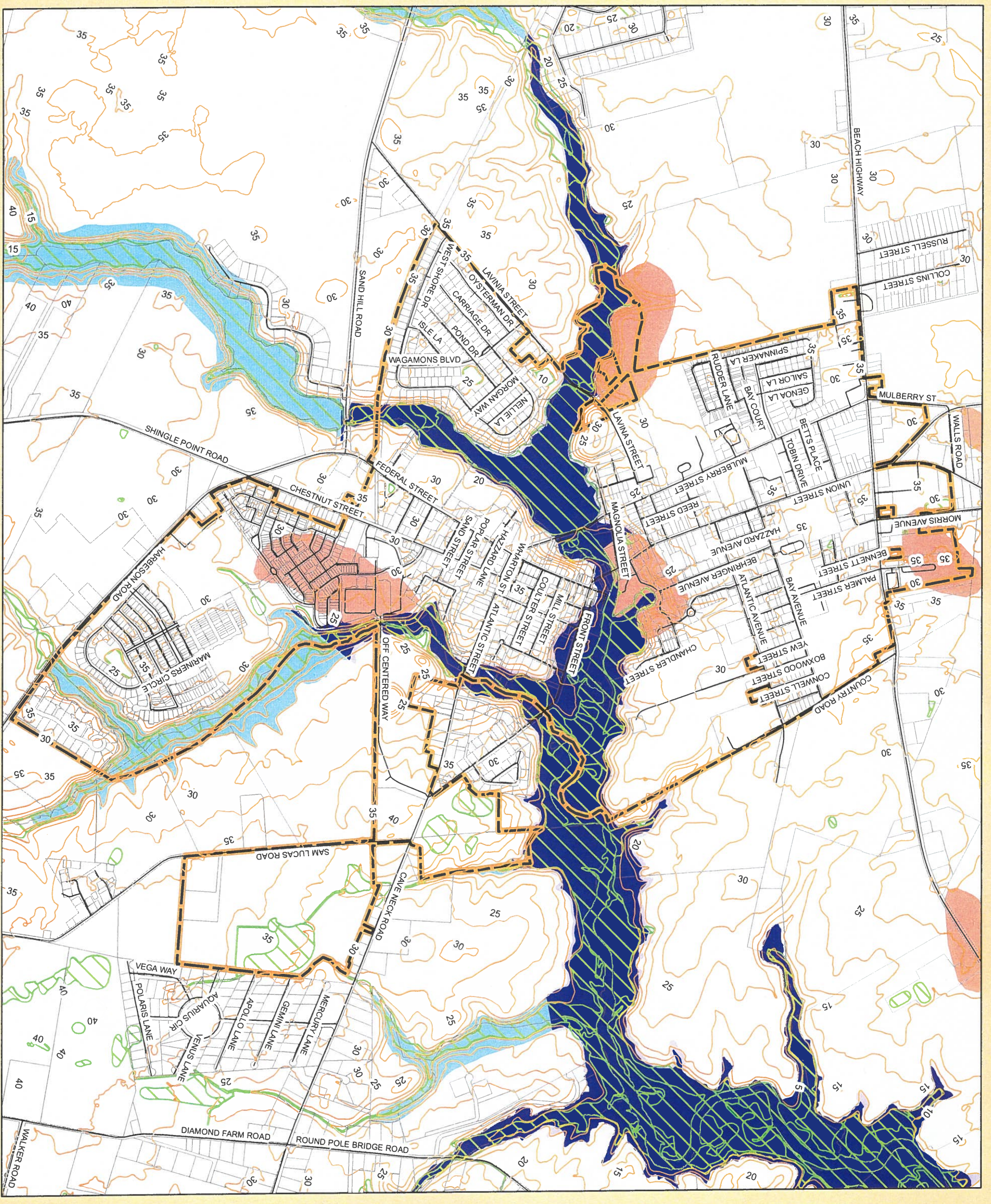
*BFE = Base Flood Elevation

Milton Comprehensive Plan September 2021



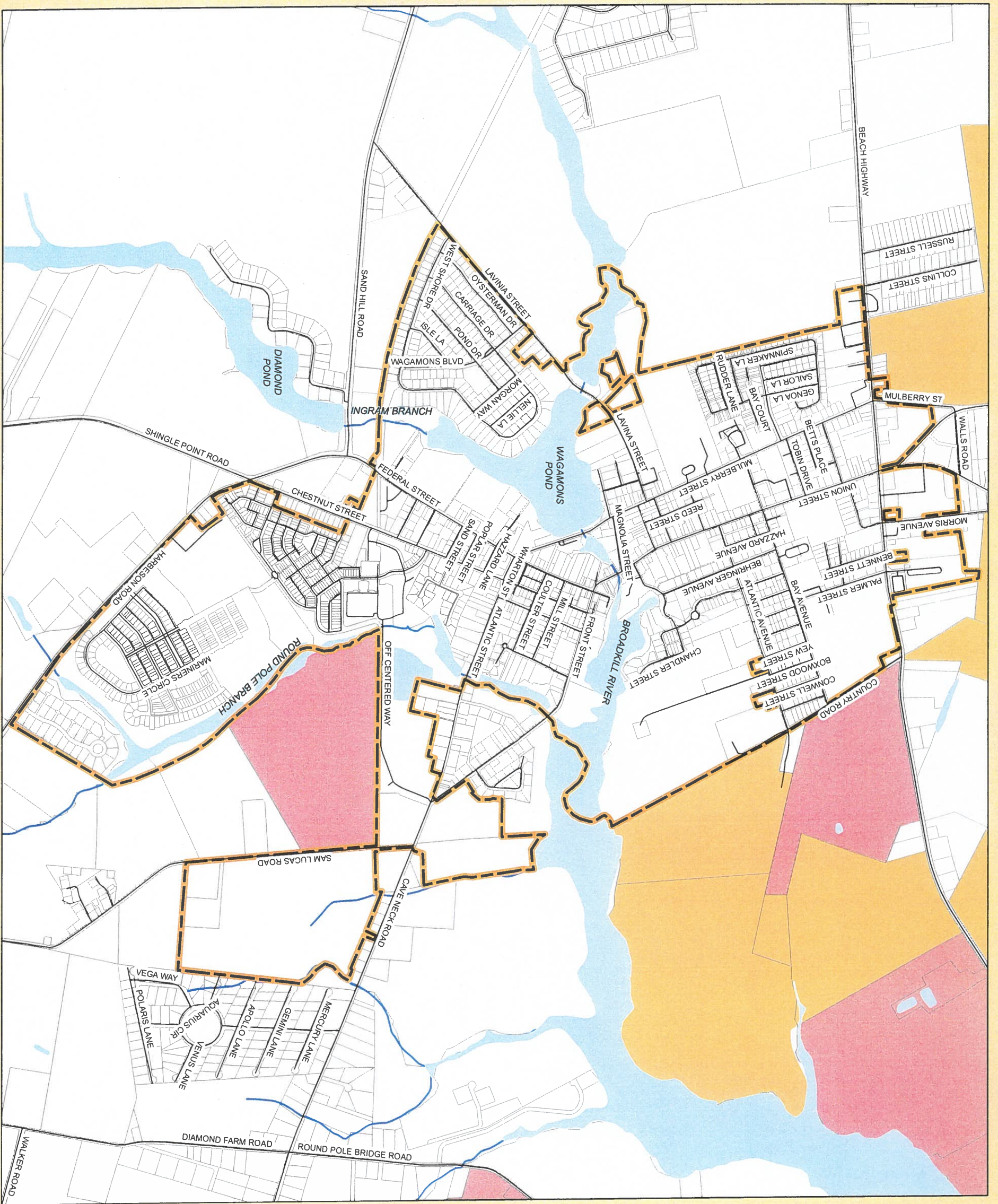
Sources:
 Roads: Delaware Department of Transportation centerline file
 Railroads: United States Geological Survey (USGS)
 Tax Parcels: State of Delaware FIRM/Map state tax parcels
 Municipal boundaries: Delaware Office of State Planning Coordination, Town of Milton
 Recharge Areas: Delaware Department of Natural Resources & Environmental Control (DNREC), 2002
 State Wetlands: Delaware Department of Natural Resources & Environmental Control (DNREC), 2007
 Flood Zones: Federal Emergency Management Agency (FEMA), BFE = Base Flood Elevation
 Contours: Quantum Spatial, Inc. & USGS

Note:
 This map is a depiction of the best available information provided by the sources listed. Pennoni does not guarantee the accuracy of the data shown. Users of this map shall be responsible for verifying all



Town of Milton, Delaware

Exhibit D2: Agricultural Lands



- Roads
- Railroads
- Town Boundary
- Lakes, Ponds, & Rivers
- Streams
- Tax Parcels
- Agricultural Easements
- Agricultural Districts

Milton Comprehensive Plan September 2021



Sources:

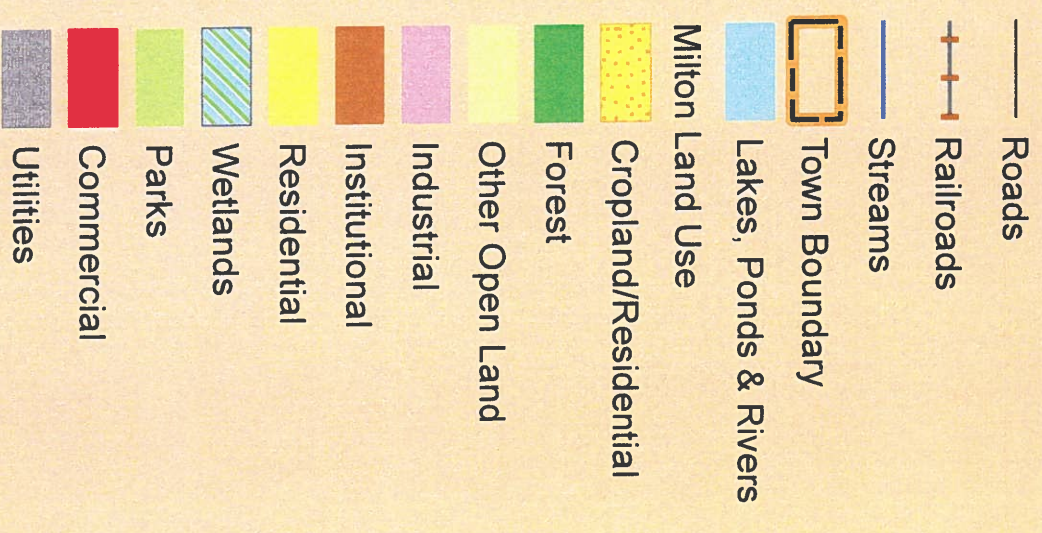
- Roads: Delaware Department of Transportation centerline file
- Railroads: United States Geological Survey
- Tax Parcels: State of Delaware FirstMAP state tax parcels
- Municipal boundaries: Delaware Office of State Planning Coordination, Town of Milton
- Agricultural Districts: Delaware Department of Agriculture, 2013
- Water Areas: United States Geological Survey, National Hydrography Dataset

Note:
This map is a depiction of the best available information provided by the sources listed. Pennoni does not guarantee the accuracy of the data shown. Users of this map shall be responsible for verifying all



Town of Milton, Delaware

Exhibit E: Existing Land Use

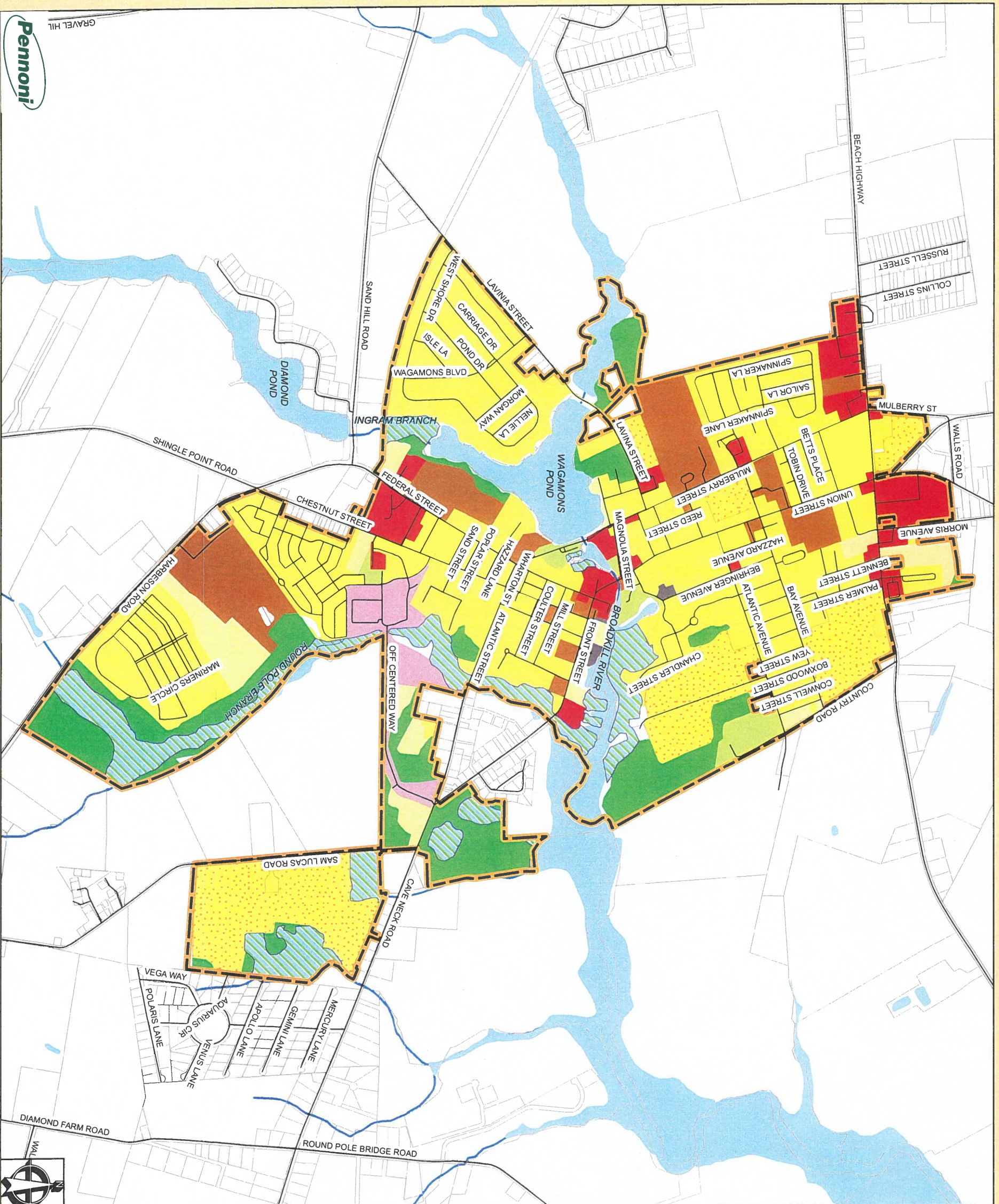


Milton Comprehensive Plan September 2021



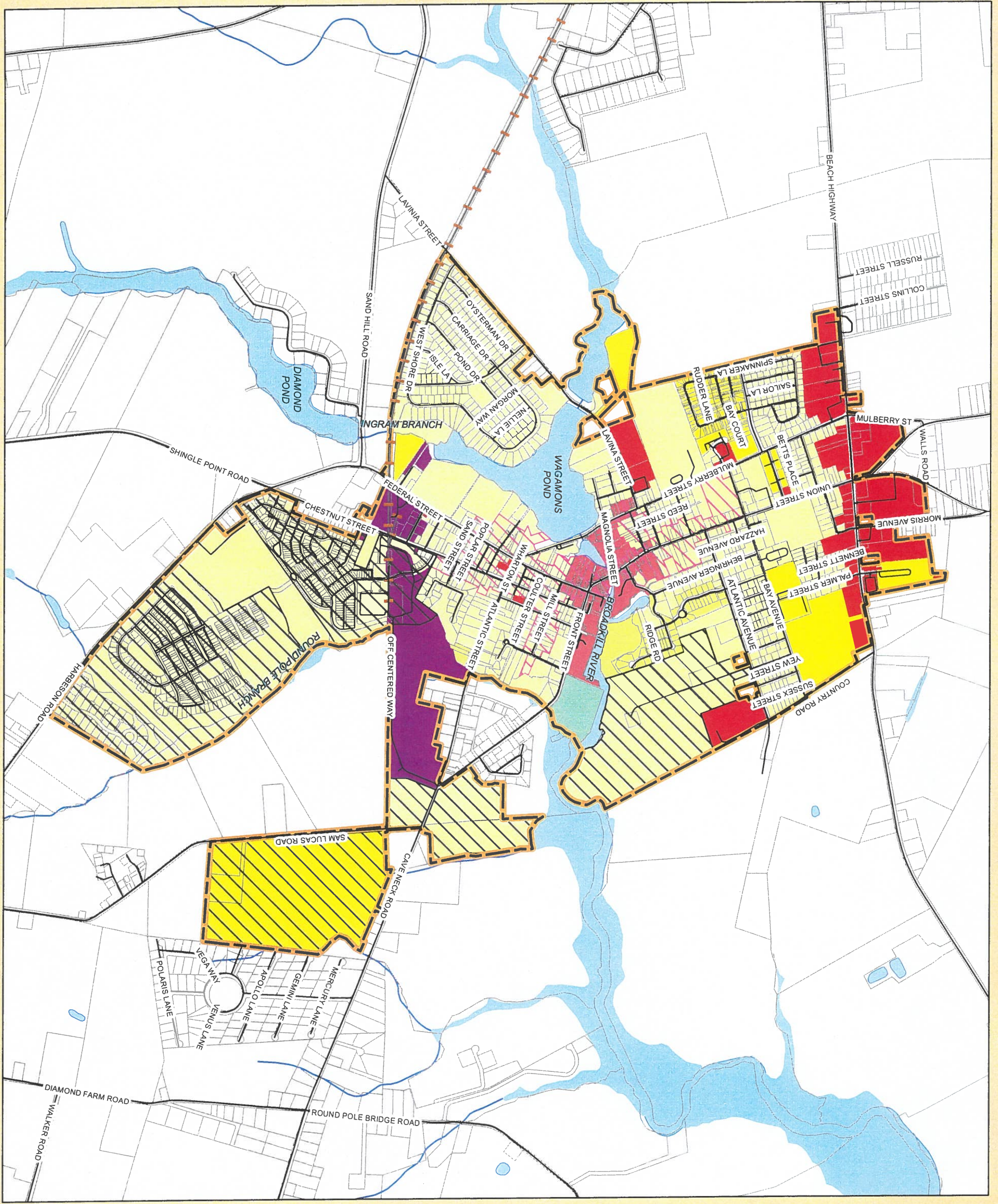
Sources:
 Roads: Delaware Department of Transportation centeline file
 Railroads: United States Geological Survey
 Tax Parcels: State of Delaware FirstMAP state tax parcels
 Municipal boundaries: Delaware Office of State Planning
 Coordination, Town of Milton
 Water Areas: United States Geological Survey, National Hydrography Dataset
 Land Use: Aerial Information Systems, Inc. & Delaware Office of State Planning Coordination

Note:
 This map is a depiction of the best available information provided by the sources listed. Pennoni does not guarantee the accuracy of the data shown. Users of this map shall be responsible for verifying all



Town of Milton, Delaware

Exhibit F: Existing Zoning



— Roads

—+— Railroads

▭ Town Boundary

▨ HPD-OD

▨ LPD

▭ Tax Parcels

Milton Zoning

C1

LI1

M-R

R1

R2

R3

TC

▭ Lakes, Ponds, & Rivers

— Streams

Milton Comprehensive Plan September 2021



Sources:
 Roads: Delaware Department of Transportation centerline file
 Railroads: United States Geological Survey
 Tax Parcels: State of Delaware FirstMAP state tax parcels
 Municipal boundaries: Delaware Office of State Planning
 Coordination, Town of Milton
 Water Areas: United States Geological Survey, National Hydrography Dataset
 Zoning: Town of Milton

Note:
 This map is a depiction of the best available information provided by the sources listed. Pennoni does not guarantee the accuracy of the data shown. Users of this map shall be responsible for verifying all

