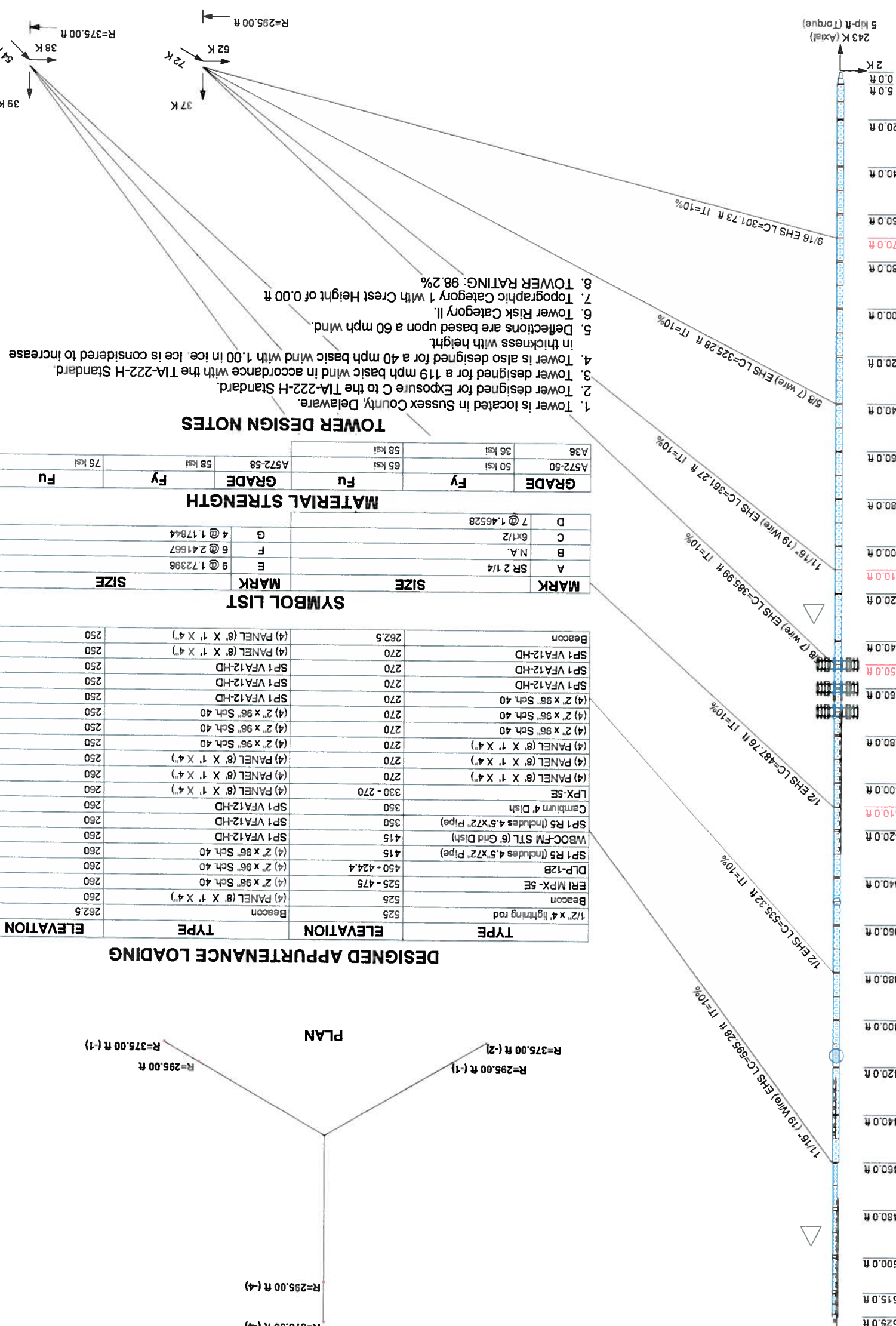


<b>Valmont</b> STRUCTURES 1545 Pidco Dr. Plymouth, IN Phone: (574) 936-4221 FAX: (574) 936-6458		Valmont Industries, Inc. - Specialty Structures Group Client: WBOC-TV Project: #36 x 525' - Milton, DE Quotation 489681-01
Dwg No.: E-1	Scale: NTS	Code: TIA-222-H
Path: C:\Towers\489681\489681-01.dwg	Date: 07/28/20	Drawn by: LRYM

Section	Legs	Diagonals	Top Girts	Mid Girts	Bottom Girts	Horizontals	Face Width (ft)	# Panels @ (ft)	Weight (K)
A								26 @ 0.7	26 @ 0.4
B	SR 5/8	SR 3/4	A36						
C		A572-50							
D									
E								26 @ 1.56597	26 @ 1.56597
F							176 @ 2.4375		
G									



ALL REACTIONS ARE FACTORED

- Tower is located in Sussex County, Delaware.
- Tower designed for Exposure C to the TIA-222-H Standard.
- Tower designed for a 119 mph basic wind in accordance with the TIA-222-H Standard.
- Tower is also designed for a 40 mph basic wind with 1.00 in ice in ice. Ice is considered to increase in thickness with height.
- Deflections are based upon a 60 mph wind.
- Tower Risk Category II.
- Topographic Category 1 with Crest Height of 0.00 ft
- TOWER RATING: 98.2%

**TOWER DESIGN NOTES**

GRADE	Fy	Fu
A572-50	50 ksi	65 ksi
A36	36 ksi	58 ksi

**MATERIAL STRENGTH**

MARK	SIZE	MARK	SIZE
A	SR 2 1/4	E	9 @ 1.72396
B	N.A.	F	6 @ 2.41667
C	6x12	G	4 @ 1.17844
D	7 @ 1.46528		

**SYMBOL LIST**

TYPE	ELEVATION	ELEVATION
Beacon	525	262.5
ER1 MPX-5E	525 - 475	260
DLP-12B	450 - 424.4	260
SP1 R5 (includes 4.5"x7.2" Pipe)	415	260
WBOC-FM STL (6' Ghd Dish)	415	260
SP1 R5 (includes 4.5"x7.2" Pipe)	350	260
Camblum 4' Dish	350	260
LPX-5E	330 - 270	260
(4) PANEL (8' X 1' X 4')	270	260
(4) PANEL (8' X 1' X 4')	270	260
(4) PANEL (8' X 1' X 4')	270	260
(4) 2" X 96" Sch. 40	270	260
(4) 2" X 96" Sch. 40	270	260
(4) 2" X 96" Sch. 40	270	260
(4) 2" X 96" Sch. 40	270	260
(4) 2" X 96" Sch. 40	270	260
(4) PANEL (8' X 1' X 4')	270	260
(4) PANEL (8' X 1' X 4')	270	260
(4) PANEL (8' X 1' X 4')	270	260
(4) PANEL (8' X 1' X 4')	270	260
(4) PANEL (8' X 1' X 4')	270	260
(4) PANEL (8' X 1' X 4')	270	260
(4) PANEL (8' X 1' X 4')	270	260
(4) PANEL (8' X 1' X 4')	270	260
(4) PANEL (8' X 1' X 4')	270	260
(4) PANEL (8' X 1' X 4')	270	260

**DESIGNED APPURTENANCE LOADING**

